



28-31 Chalkwell Esplanade, Westcliff-On-Sea, SS0

BUTLER  STAG



Fantastic two-bedroom ground floor apartment with private front garden, overlooking the estuary and directly opposite Chalkwell Beach.



- Beachfront Property
- Private Garden
- Two/Three Bedrooms
- Estuary Views
- Off-Street Parking Available
- Available August 30th

Ground floor apartment set within this beach-front property. Accommodation includes a large living room with sliding doors opening to a full width private balcony and private garden, which is south facing and benefits from plenty of natural sunlight. There is a dining room/third bedroom, two further double bedrooms, separate kitchen and family bathroom.

There is off street parking for one car associated with the apartment.

Chalkwell Esplanade is a prime location with easy access to Chalkwell Beach, and mainline station. There are numerous coffee shops, ice cream parlours, and restaurants along the esplanade.

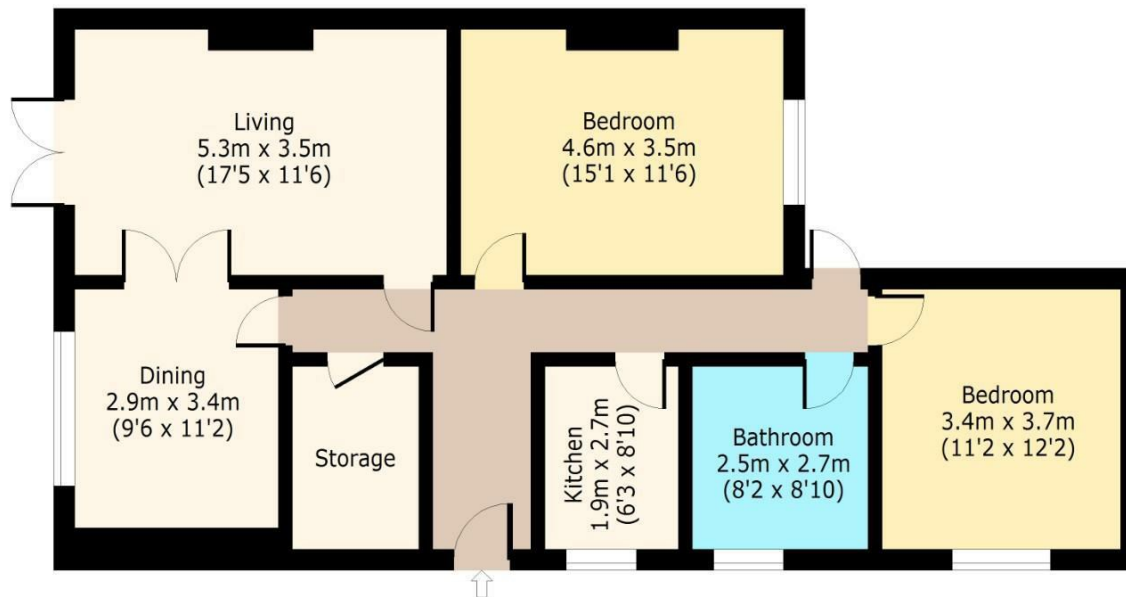




Langley House

Ground Floor

Approx. 92 Sq. meters (990 Sq. feet)



Total area: approx. 92 Sq. meters (990 Sq. feet)

For illustration purposes only - not to scale

www.lpaplus.com

BUTLER & STAG

☎ 020 8102 1236

🏠 508 Roman Road, Bow, London, E3 5LU

✉ bow@butlerandstag.com

www.butlerandstag.uk

IMPORTANT NOTICE - These particulars have been prepared in good faith and they are not intended to constitute part of an offer or contract. We have not performed a structural survey on this property and the services, appliances and specific fittings have not been tested. All photographs, measurements, floor plans and distances referred to are given as a guide and should not be relied upon.